

Edinburgh Emergency Department

Join our Emergency Nursing Team



Work in a dynamic and fast-paced department full of learning opportunities for Emergency Nurses and Clinical Support Workers



About Us

The Emergency Department here at the Royal Infirmary of Edinburgh is the biggest Adult Emergency Department in Scotland. As one of Scotland's 4 Major Trauma Centres, we are an exceptionally busy department caring for an average of 350-450 people over the age of 16 per day. We receive patients by road and air ambulance due to our dedicated helipad on site and offer pre-hospital care via our Emergency Medicine flying Squad—Medic One, giving us excellent relationships and links with our colleagues in the Scottish Ambulance Service.



Our Mission Statement

Our purpose is to ensure that the patient's journey through the Emergency Department is smooth and timely in line with the 4-Hour Emergency Access Standard.

The Emergency Department will provide **EXCELLENCE** in care through teamwork, education, clinical governance, research and innovation.

EMPATHY will be shown in every interaction, alongside patient centred care, shared decision making, support for colleagues, dignity and respect.

The emergency department staff will show **MASTERY** as they aim to be experts in emergency care with an environment and systems which support and promote this.

Why Do Emergency Nursing?

We are seeking compassionate and highly motivated individuals to join our outstanding team at the Emergency Department within Edinburgh Royal Infirmary. Join our team and work in a busy, fast-paced and dynamic environment in the heart of Scotland's Capital city.

If you are a hardworking, resilient and compassionate individual who enjoys teamwork, caring for patients with a variety of clinical presentations, learning new skills, being put to the test and thrives in exciting and challenging situations, then, we would ask...why not?!

If you need more inspiration, have a look at our recruitment video made by our amazing team here at the Emergency Department:

<https://www.youtube.com/watch?v=Ejc1mldvKkc>

Keep reading to see just some of the reasons why you should join our team!



Join a diverse and supportive team full of amazing individuals



Become part of an inspirational team, who work together to achieve the best outcomes for patients while demonstrating the trust values at the heart of everything they do: Dignity and Respect, Care and Compassion, Quality, Teamwork and Openness, Honesty and Responsibility.

We love welcoming new members of the team, and provide a one week ED specific induction with our Education facilitator, followed by supernummary time to allow you to get to know the department and your new team. We have our own wellbeing team, dedicated time to talk sessions and offer various staff support services within the Emergency Department and the NHS Lothian Trust.



Our ANPs were shortlisted for ACAP "Best supportive team of the year"

"I felt very apprehensive beginning my career in a busy Emergency Department. However, all the staff are very supportive, there is always someone there to ask if you're not sure. We have a great team here who are all very approachable and happy to help."

Experience working in a Major Trauma Centre



The Royal Infirmary of Edinburgh is one of four major trauma centres in Scotland. It is part of the Scottish Trauma Network and has a designated Major Trauma Ward. Care of trauma patients is undertaken by a consultant-lead, highly skilled Multidisciplinary Team.

"I have worked in the ED for 19 years in a variety of roles including, staff nurse, charge nurse and nurse educator. I enjoy working in the ED due to the incredible teamwork and the diversity of patients we care for. There is always something to learn, and ways to improve our practice. I have a strong interest in human factors and love working in an environment that supports and encourages shared learning and development. I love my job and couldn't imagine working anywhere else!"



Caroline Hughes, Major Trauma Nurse Educator and Senior Charge Nurse



Work closely with the award winning EMERGE Research Team

“The Emergency Department at the Royal Infirmary of Edinburgh is committed to providing the highest quality evidence-based care to all patients attending the department.

With this aim, research activity (along with audit) is seen as integral to improving patient care.

It is well established that hospitals that have flourishing research programmes provide better clinical care to their patients.

In EMERGE we aim to provide every patient attending the Emergency Department, the opportunity to take part in clinical research where available.

EMERGE strongly believe that research should be seen as part of providing excellent clinical care to all of our patients.”

-Quote taken directly from:

<https://www.emergeresearch.org/about/>

Powered by
Curiosity



Alison Williams, ANP, Senior Research Nurse
British Empire Medal

Learn from an amazing Multidisciplinary Team

Our MDT is Comprised of Physicians assistants, Advanced Nurse Practitioners, Housekeepers, Emergency Nurse Practitioners, Radiographers, Occupational Therapists, Assistant Practitioners, Physiotherapists, Doctors, Nurses, Navigators, Domestic staff, Reception staff, Administrative staff, Porters, Clinical Educators and many specialists from a variety of clinical areas.



We support each other, and work collaboratively to provide exceptional care to all those who access the service.

We thrive on shared learning and experiences and have a sense of teamwork and comradery that is second to none.



The ED Team raising funds for "Movember"

Work in a speciality where the learning never ends

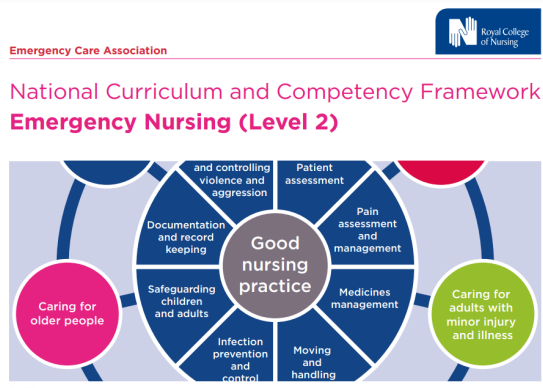


Learn a variety of skills, from the assessment and treatment of minor injuries, to managing medical emergencies and trauma team working, through internal teaching and external nationally recognised courses.

As a University Teaching Hospital we pride ourselves on offering continual education and training opportunities to all our staff and students. Our skilled multidisciplinary team have an extensive range of knowledge and experience to share.

Here, you will learn transferable skills, that will not only fast track your career, but will begin you on a journey of life long learning and development.

“Although I have worked in the Emergency Department for years, I still learn something new everyday. I enjoy the different experiences. No two days are the same and there is such variety in our patient presentations that there is always something new and interesting to learn.”



Our LearnED Team were highly commended as finalists in the 2016 BMJ Awards,

Work in an exciting and dynamic environment with many opportunities

Our Emergency department is extremely busy, but also extremely interesting. We see a wide range of presentations, allowing us to continually develop, learn and gain skills to care for a wide range of patients and conditions. We have a pre-hospital Medic One service deployed from the department to bring hospital level care to those who need it the most. Working here, you will get an experience like no other, gain invaluable transferable skills and have the potential to develop into more advanced nursing roles.



"I have been an ED Nurse for 18 years and have worked in the Department since 2005, starting as a D grade Staff Nurse. No two days are the same and each day is diverse—it is never dull! I have experienced and learned so much in my time, that I don't think I would have gained working anywhere else. ED is challenging but also so rewarding, and the teamwork is fantastic #EDFamily."



Ray Middlemiss
Clinical Nurse Manager
Proud to lead the team

Be part of an Outstanding Team



"Unless you have worked in an ED, it's difficult to articulate just how much of a close team we are. We go through a lot together, which has brought us closer together and made us more like a second family. We celebrate each others successes, look after each other on the tough days and work together to provide the best care to our patients. I couldn't imagine working anywhere else."

"Nurses, doctors, radiographers, porters, CSWs, housekeepers, PAs, ANPs etc... we are all part of a phenomenal team, one I cant compare to any other I've worked in. They're an amazing bunch!"



"I Love the team nights out and team building days. I have made lots of friends for life working in the ED"



Celebrate with us—we like to party!



Further Information

The Royal Infirmary of Edinburgh is one of Scotland's most famous and prestigious Hospitals. It is an Acute University Teaching Hospital and is home to a wide range of expert medical and surgical services including:

- Acute Medicine
- Cardiology (PCI)
- Cardiothoracic Surgery
- Gastroenterology
- General Surgery
- Maternity
- Gynaecology
- Neonatal Units
- Medicine of the Elderly
- Orthopaedic Surgery
- Renal Medicine and Dialysis
- Respiratory Medicine
- Sleep Medicine
- Neurosurgery
- Neurology
- Stroke Medicine
- Transplant Surgery
- Vascular Surgery

Our Nursing Team

There is a variety of nursing roles within the department, each with a wide range of knowledge and skills playing a vital role in the care of patients.

The Nursing staff are divided into 4 teams, named Team A,B,C and D. Each Team comprises of a Senior Charge Nurse, 4-5 Deputy Charge Nurses, Staff Nurses, Assistant Practitioners and Clinical Support Workers. We work in our allocated team for 1 year, then change teams annually. This enables us to develop close working relationships with our team, where allocated charge nurses are responsible for the management, training and development of each member of staff.

We generally work 12.5 hour shifts with rotation between dayshift (07:00-19:00) and Nightshift (19:00-07:30) over a 4 week rolling rota as below:

Week	MON	TUE	WED	THIURS	FRI	SAT	SUN
1	DAY	NIGHT	NIGHT	NIGHT			
2					NIGHT	NIGHT	NIGHT
3	NIGHT					DAY	DAY
4		(DAY)	(DAY)	(DAY)	(DAY)		
*WORK 3 DAYS BETWEEN TUESDAY AND FRIDAY—NOT SET							

Note: We endeavour to keep staff working on their rota with their team however the Rota is not set and may change occasionally due to service requirements.

Interested?

Like what you see? We would love to hear from you!

If you are interested in working with us and require further information, please contact one of our Senior Charge Nurses, you will find their contact details on the post advert.

Apply online today:

<https://apply.jobs.scot.nhs.uk/Home/Job>



Further Information and references :

Twitter: @EdinburghEM

<https://learned.rocks/>

<https://>

www.edinburghemergencymedicine.com/

<https://>

www.emergeresearch.org/

Credit to: NHS Creative 2020, https://nhscreative.org/portfolio_page/emergency-department-recruitment-packs/

(E: Creative@NHScreative.org) for inspiration in the development and design of this recruitment pack.